

USER MANUAL

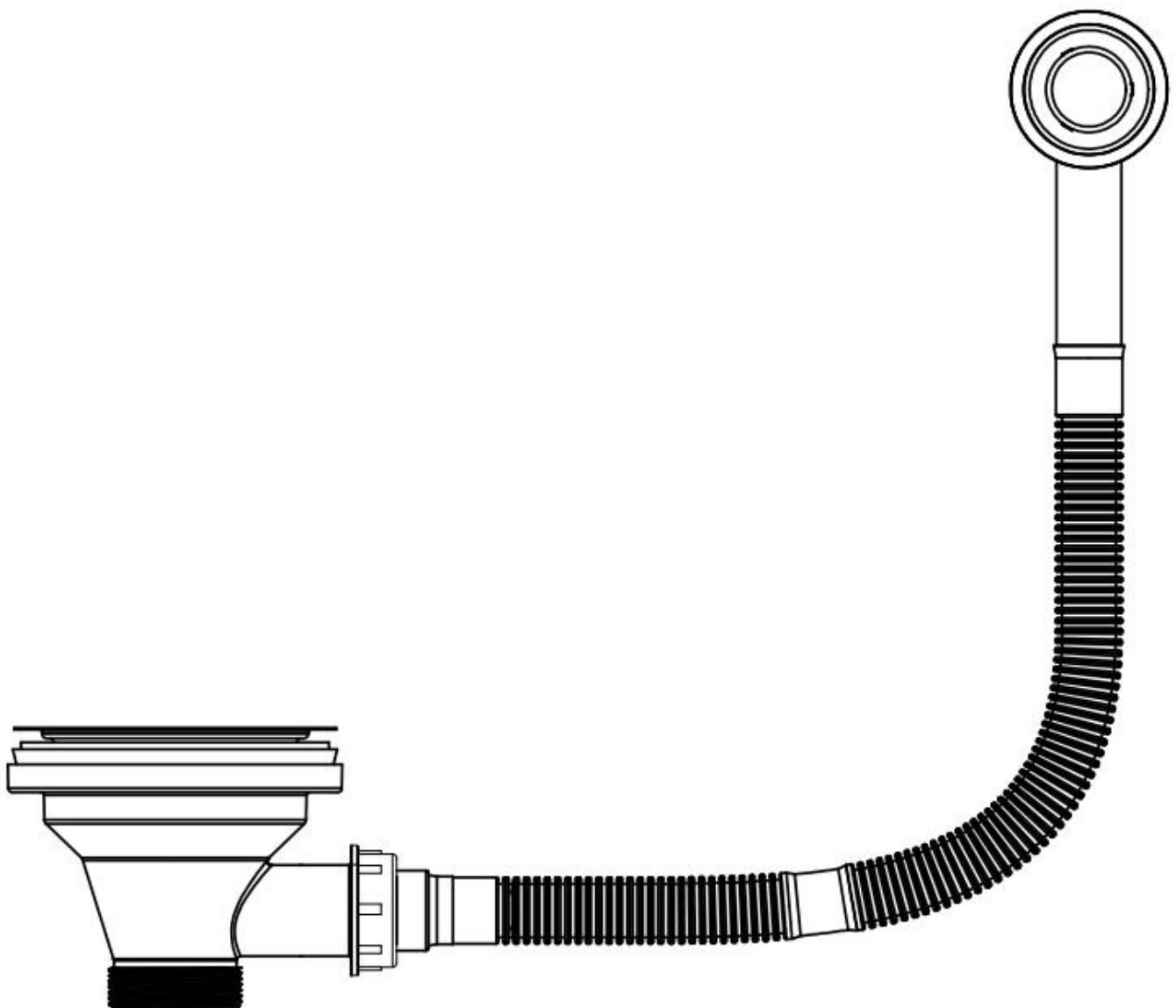


Thank you for choosing Better Bathrooms.
Please read this manual before installing your product
and keep for future reference.

**better
bathrooms**

Strainer with round overflow - Brushed stainless steel/ Black/ Copper/ Brushed Brass

BSWRCH & BSWRBLK & BSWRCOP & BSWRBB



- **Single-person assembly**
- **Tools required**
- **We always recommend using professional tradespeople to install your product**

V1_19.09.2025

Congratulations on your purchase

And welcome to our growing gang of savvy shoppers

We're on a mission to bring you extraordinary bathroom products, for less. From modern to traditional style ceramics, plus the gorgeous fixtures, fittings and furniture to match. So, you can fall in love with your space every single day.

As one of the UK's largest independent bathroom stores, we've received countless awards; including the National Business Awards UK, the Digital Entrepreneur Awards and being placed on The Sunday Times Fast Track 100.

We hope your new product goes above and beyond your expectations. However, should any problems occur, please:

- log in to your account and contact our customer services team via your self-serve portal – betterbathrooms.com/CustomerAccount/Login
- contact us via betterbathrooms.com/content/contact-us

Important information

- Please read these instructions thoroughly and retain for future reference


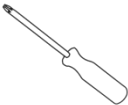
Contents

- Component Listing
- Tools Required
- Technical Drawing
- Installation Notices
- Installation Instructions
- Maintenance, Care & Cleaning

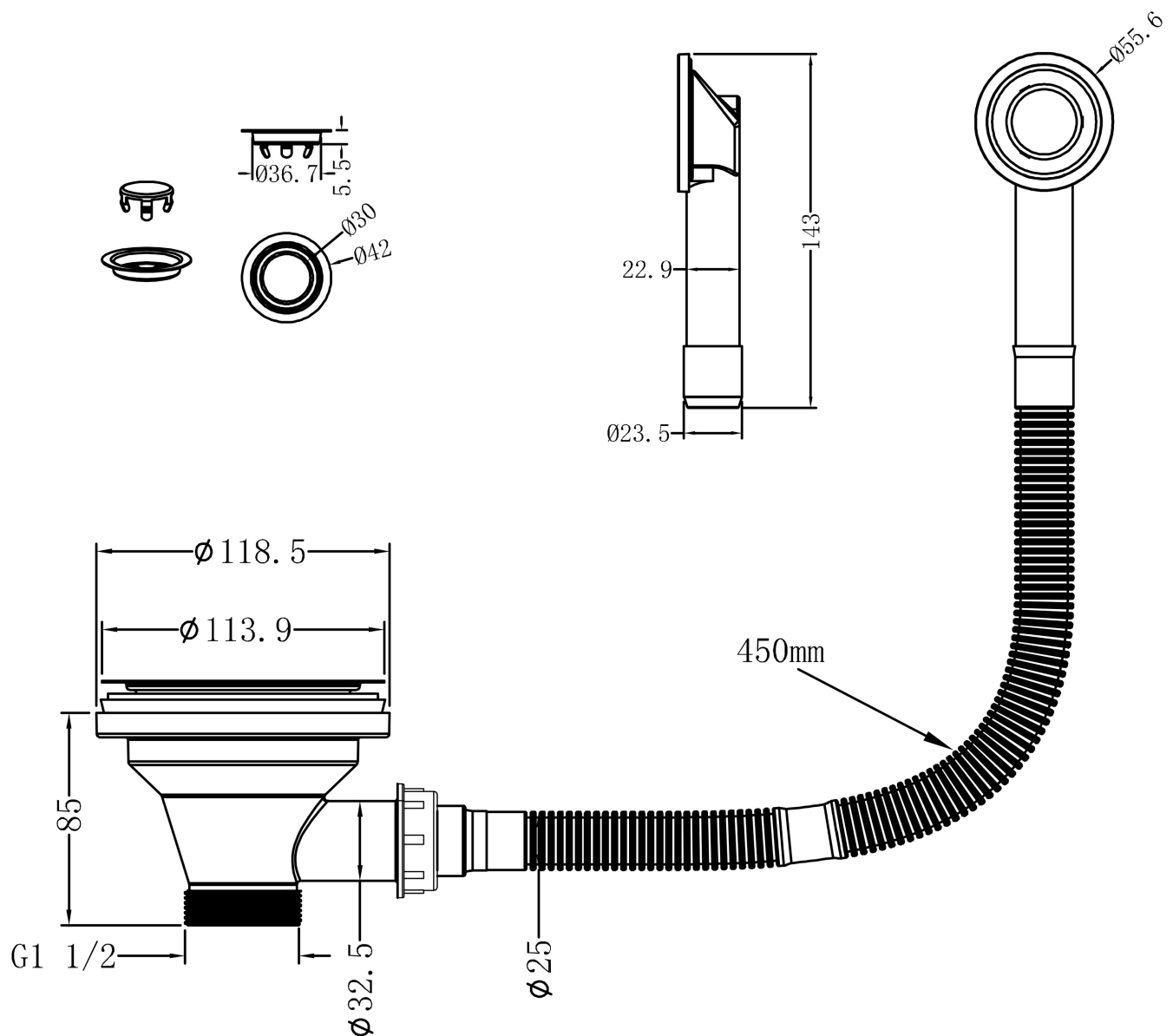
Component including

- 1. Plug Assembly * 1pc
- 2. Setting Tool * 1pc
- 3. Screw 1: 15*25mm * 1pc
- 4. Screw 2: 15*70mm * 1pc
- 5. Waste Body * 1pc
- 6. Upper Sealing Water Ring * 1pc
- 7. Lower Sealing Water Ring * 1pc
- 8. Waste Body * 1pc
- 9. O ring * 1pc
- 10. Nut * 1pc
- 11. Overflow pipe * 1pc
- 12. Buckle Overflow Assembly * 1pc
- 13. Round Cushion * 1pc
- 14. Overflow Base * 1pc
- 15. Screw 3: M5*14 * 1pc
- 16. Screw 4: M5*18 * 1pc
- 17. Overflow Cover * 1pc

Tools Required (not supplied)

 <p>Gloves</p>	 <p>Screwdrivers</p>
---	---

Technical Drawing

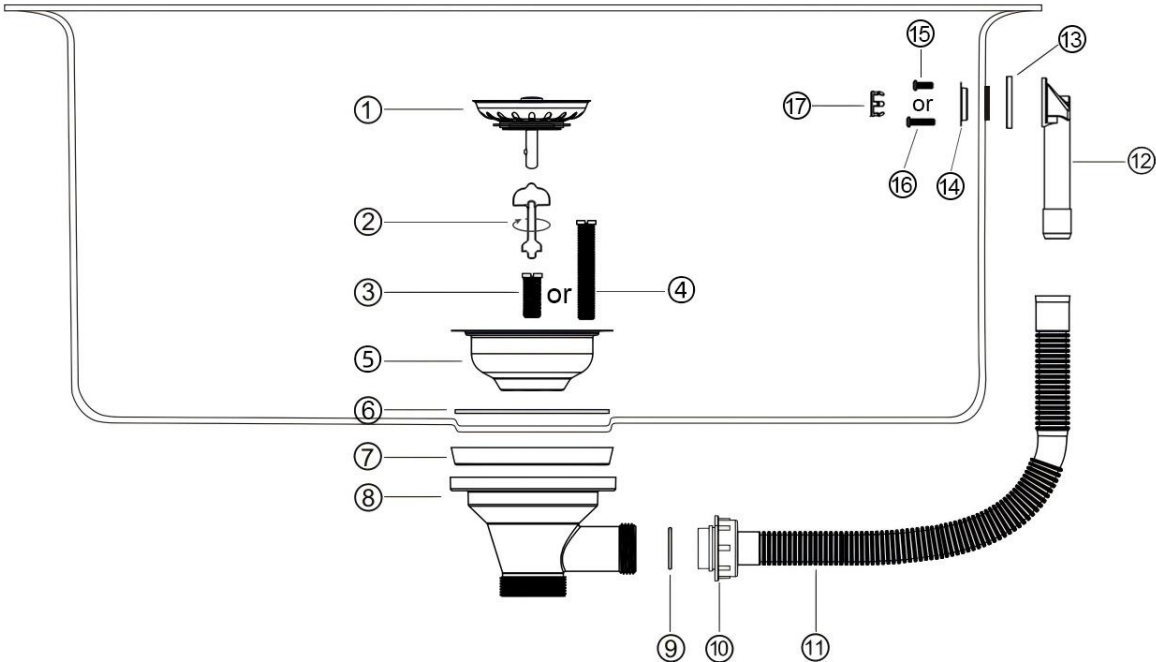


Installation Notices

- Observe all plumbing and building codes in accordance with your area and local requirements.
- Make sure the strainer size is match with your sink.
- All dimensions are nominal! Be sure to measure your sink prior to installation.
- It is recommended to install all Better Bathrooms products by hiring a licensed professional.
- Read installation and maintenance instructions thoroughly before installing. Be sure to use proper tools and always wear proper personal safety accessories for your protection.

Installation Instructions

- Separate the strainer (①~⑰)
- Insert ⑤ into drain hole with ⑥. Install ⑦ and ⑧ underneath the sink.
- Using the screw ③ or ④ with ②, tighten the ⑤ and ⑧ into place.
- Insert ① to seal water.
- Insert ⑫ outside the overflow hole with ⑬.
- Using the screw ⑮ or ⑯ tighten the ⑫, ⑬ and ⑭ into place.
- Click the ⑰ into place.
- Connect ⑪ and ⑫.
- Connect ⑧ and ⑪ with ⑨ by tightening ⑩.



① Plug Assembly	⑩ Nut
② Setting Tool	⑪ Overflow Pipe
③ Screw 1: 15*25mm	⑫ Buckle Overflow Assembly
④ Screw 2: 15*70mm	⑬ Round Cushion
⑤ Waste Flange	⑭ Overflow Base
⑥ Upper Sealing Water Ring	⑮ Screw 3: M5*14
⑦ Lower Sealing Water Ring	⑯ Screw 4: M5*18
⑧ Waste Body	⑰ Overflow Cover
⑨ O ring	

Maintenance, Care & Cleaning

By following these maintenance tips, you can maintain the finish of your Strainer for longer:

- Harsh scratching is not recommended.
- Scratching on the surface of strainers occurs as a result of normal use over time. Scratches cannot be removed, but they will fade in appearance over time. Cleaning on a regular basis is the best form of maintenance. Cleaning a little bit on a regular basis is preferable to cleaning a lot on a sporadic basis.
- The best way to prevent future problems is to keep the strainer clean and dry. After each use, rinse and towel dry the strainer to avoid major cleaning and to keep it shiny and free of water spots.
- Make sure there's no standing water in the strainer, as this can lead to mineral deposits. The appearance of your strainer can be affected by the quality of your water, which varies from household to household.
- When cleaning your strainer, choose the gentlest method that will get the job done. When using household cleaners such as detergents or bleaches, use extreme caution.
- Use cleaning products specifically designed for stainless steel and follow the manufacturer's instructions to treat grime and mineral deposits that may accumulate over time.
- To avoid water spotting, always rinse the strainer after using a cleaning agent and wipe it dry.
- Do not clean your strainer or any utensils in the strainer with metallic scouring pads or steel wool pads. They will not only scratch the strainer, but will also leave a residue of small iron particles on the surface, which may or may not be visible, but will almost certainly cause rusting and corrosion.
- Do not leave any cast iron or mild steel cookware or implements in the strainer for long periods of time. Surface corrosion and strainer staining are caused by the presence of iron and moisture in stainless steel.
- Never leave wet sponges or cleaning pads in the strainer overnight because they will trap water and stain or discolour the strainer surface. Stainless steel's unique properties are determined by how much of the surface is exposed to the atmosphere.
- We do not recommend using chlorine bleach in your stainless-steel strainer because chlorine will eat away at the protective layer that keeps stainless steel from rusting. Drain cleaners that contain sulphuric or hydrochloric acid will attack the strainer as well.
- In extreme cases, repeatedly pouring boiling hot water into coloured strainers can cause crazing and cracking. As a result, we advise caution when releasing hot water directly onto the strainer surface for long periods of time.

For more information

- visit betterbathrooms.com
- email customerservices@buyitdirect.co.uk
- call 0330 390 3062
- write to Trident Business Park, Neptune Way, Huddersfield, HD2 1UA

**better
bathrooms**

Part of the BuyItDirect Group